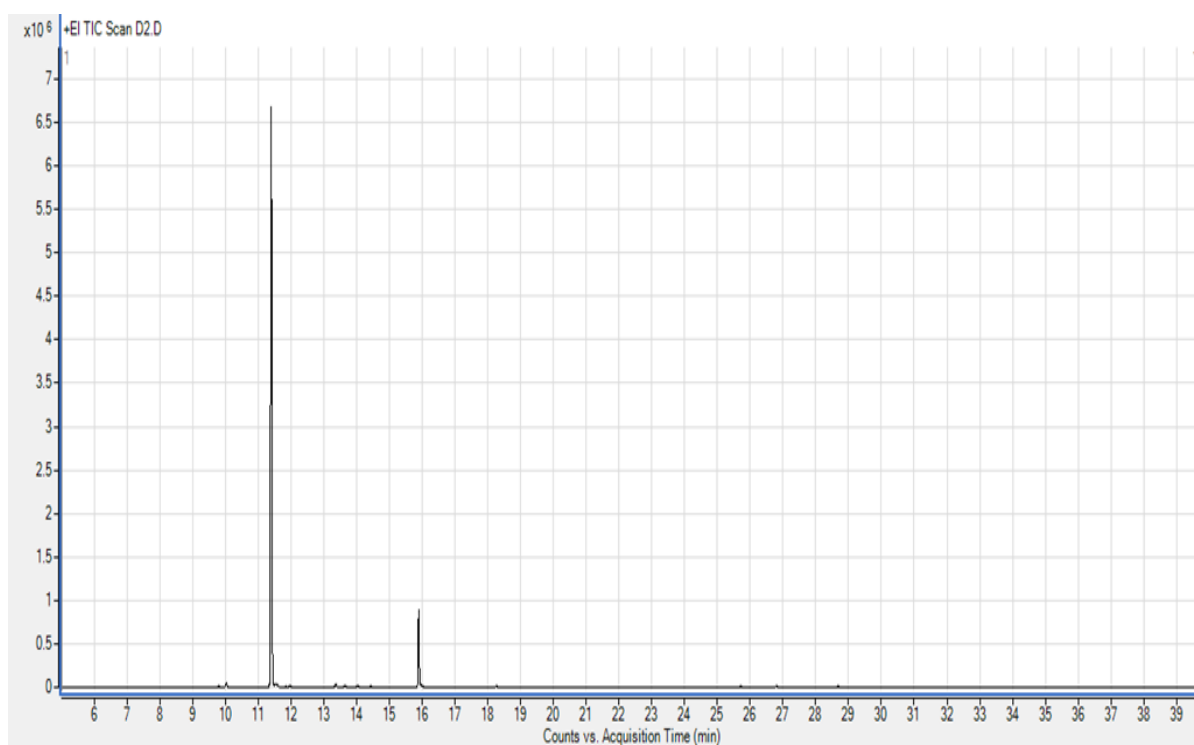
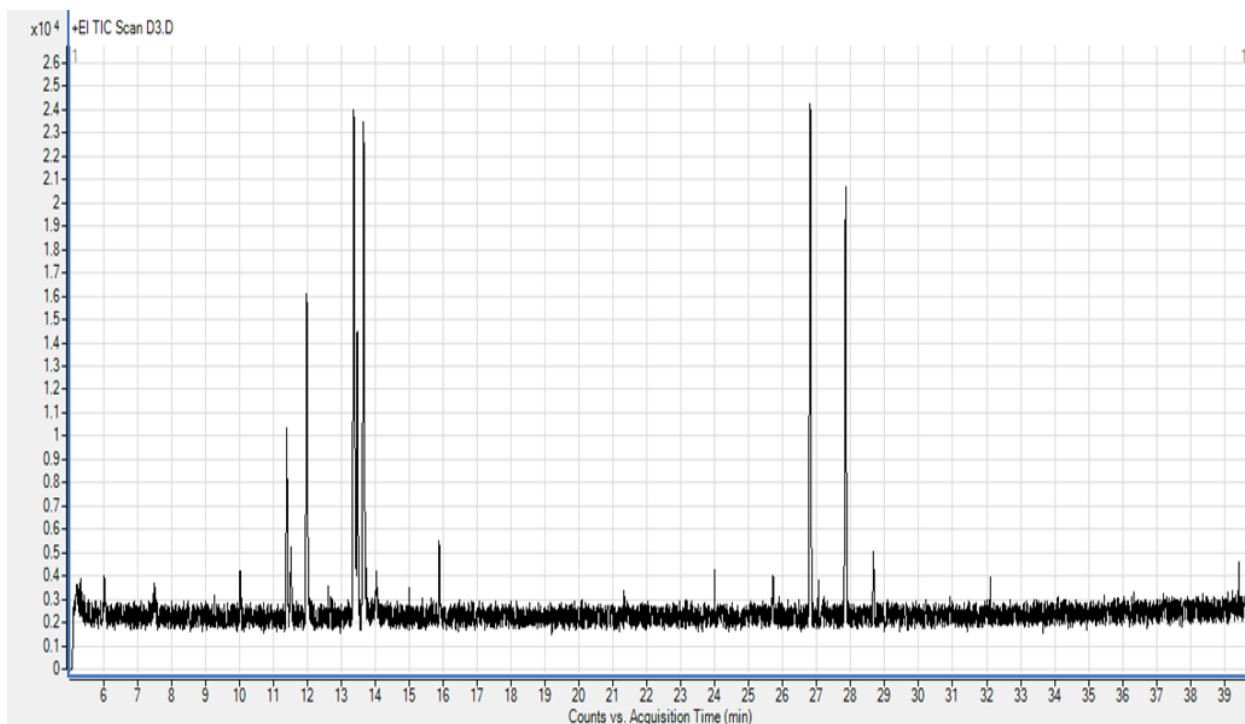


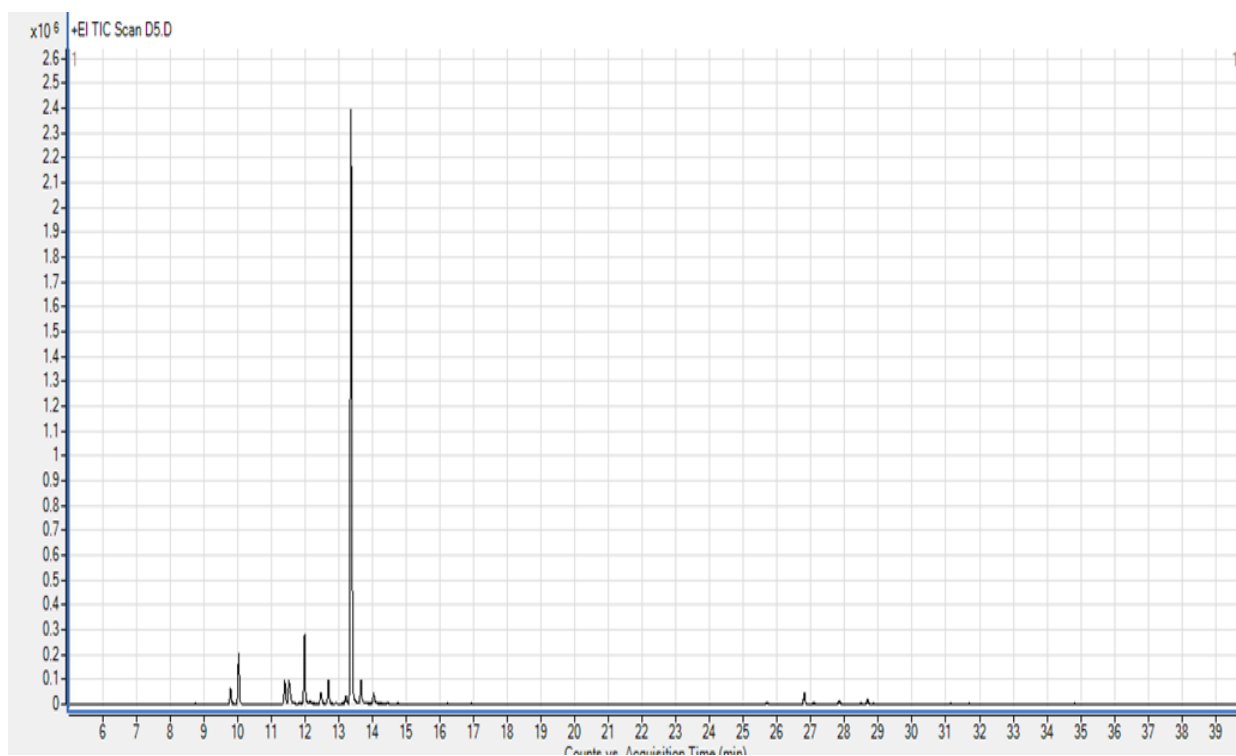
Supplementary figure. 1. Gas chromatogram of the volatile fraction determined by means of HS-GC-MS for *Salvia verticilata* (Bojanine vode).



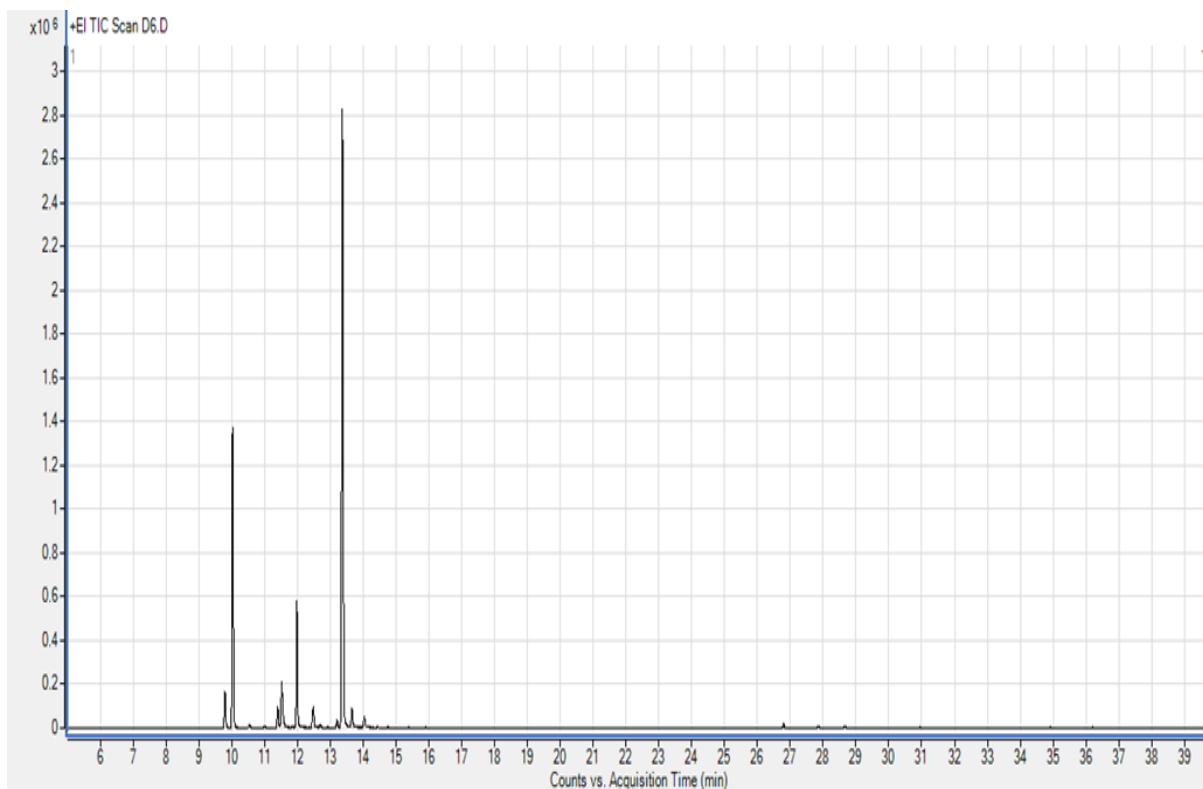
Supplementary figure. 2. Gas chromatogram of the volatile fraction determined by means of HS-GC-MS for *Salvia glutinosa* in the fruiting stage.



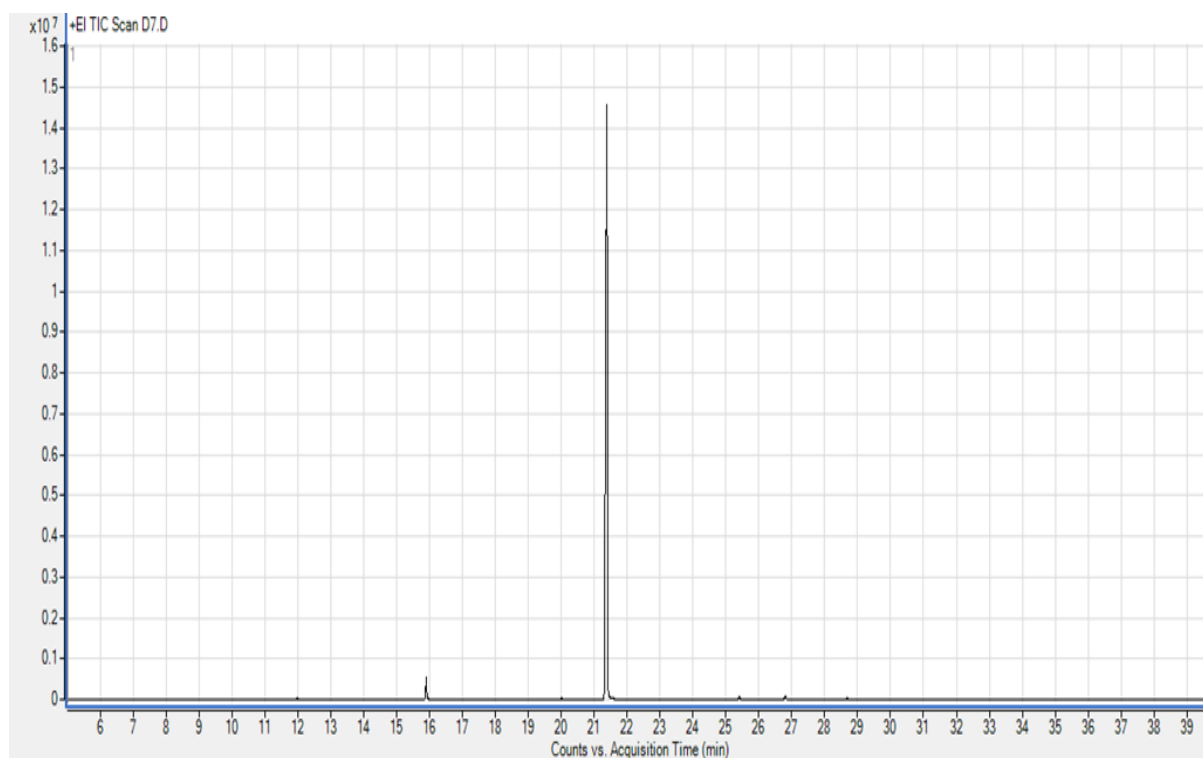
Supplementary figure. 3. Gas chromatogram of the volatile fraction determined by means of HS–GC–MS for *Salvia glutinosa* in the flowering stage.



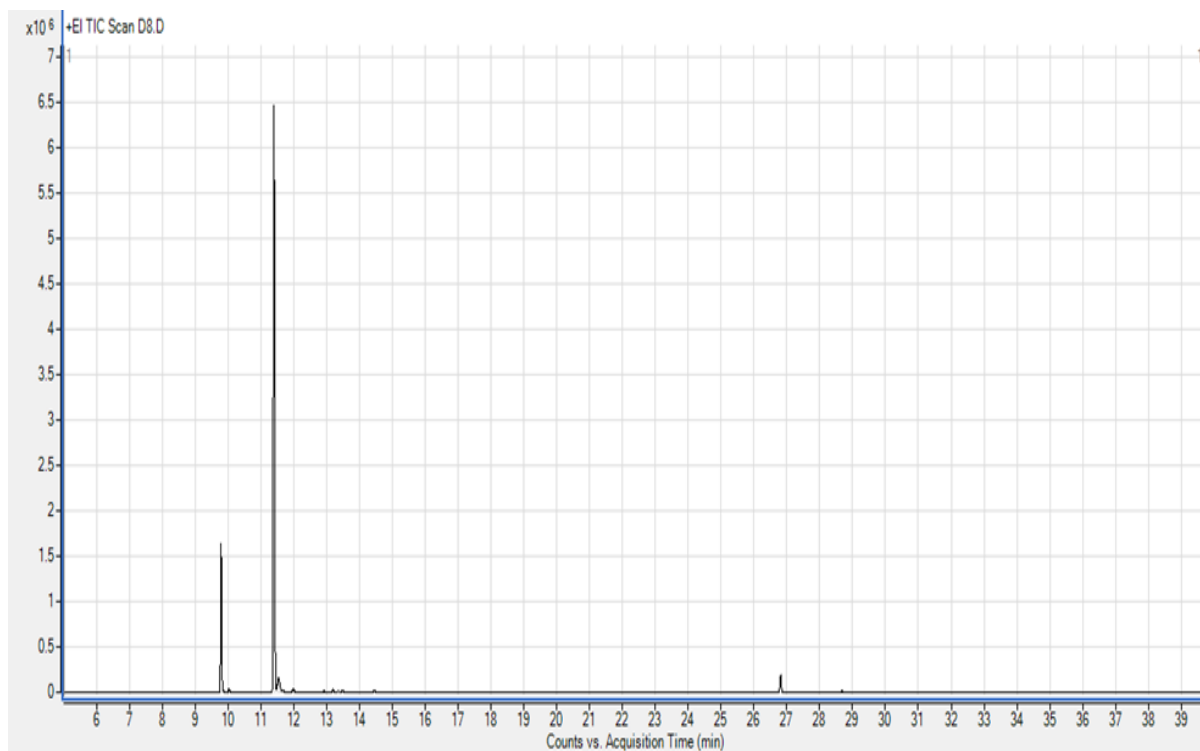
Supplementary figure. 4. Gas chromatogram of the volatile fraction determined by means of HS–GC–MS for *Salvia verticilata* (Seličevica).



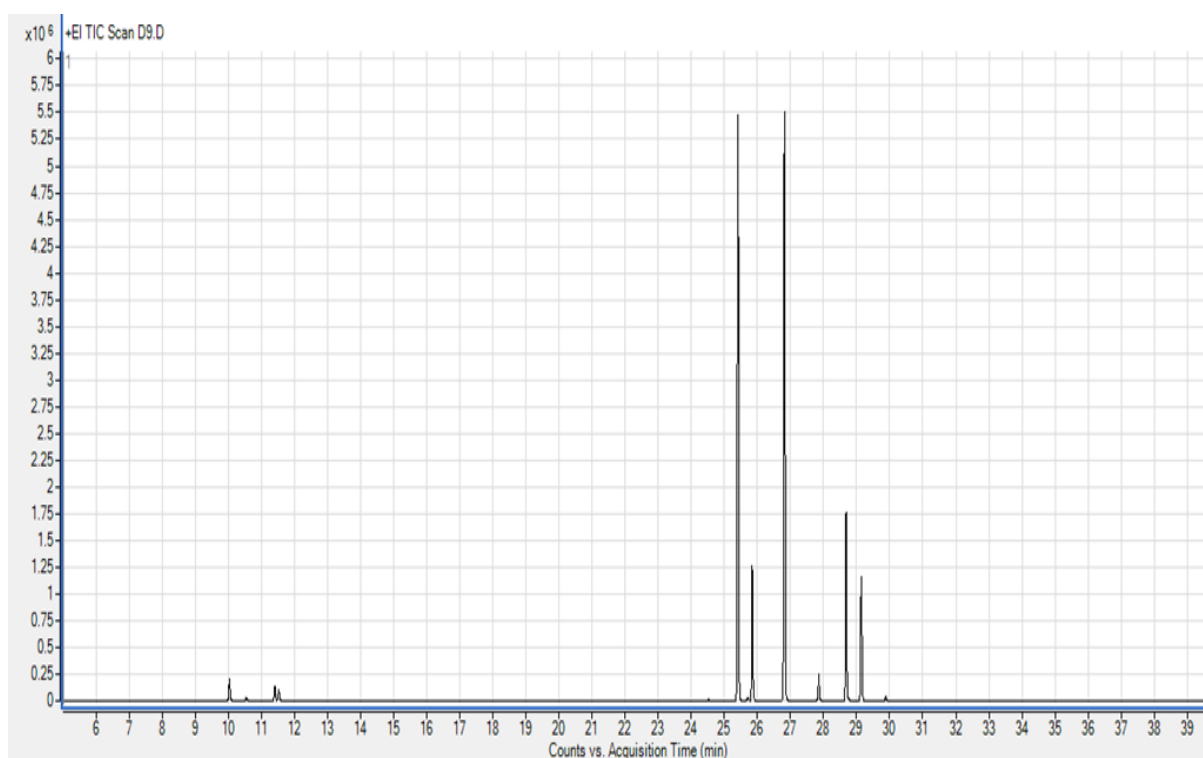
Supplementary figure. 5. Gas chromatogram of the volatile fraction determined by means of HS-GC-MS for *Salvia verticilata* (Temska).



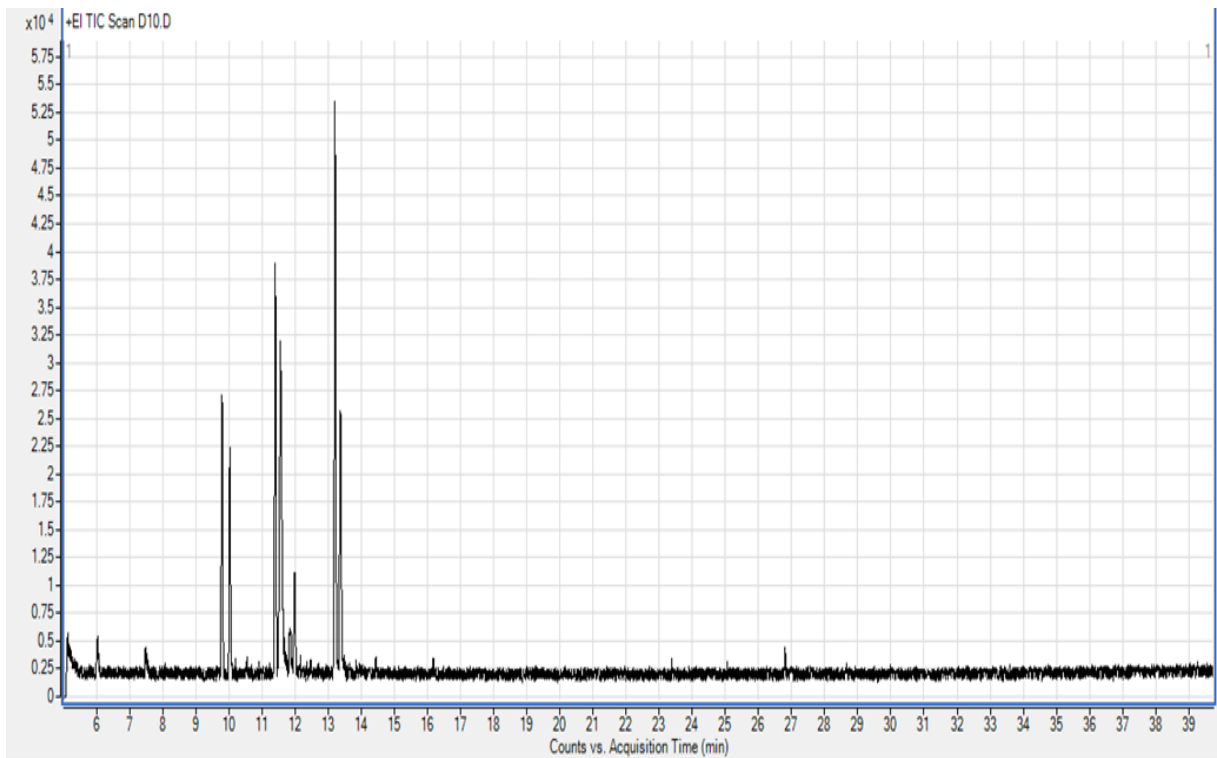
Supplementary figure. 6. Gas chromatogram of the volatile fraction determined by means of HS-GC-MS for *Salvia sclarea*.



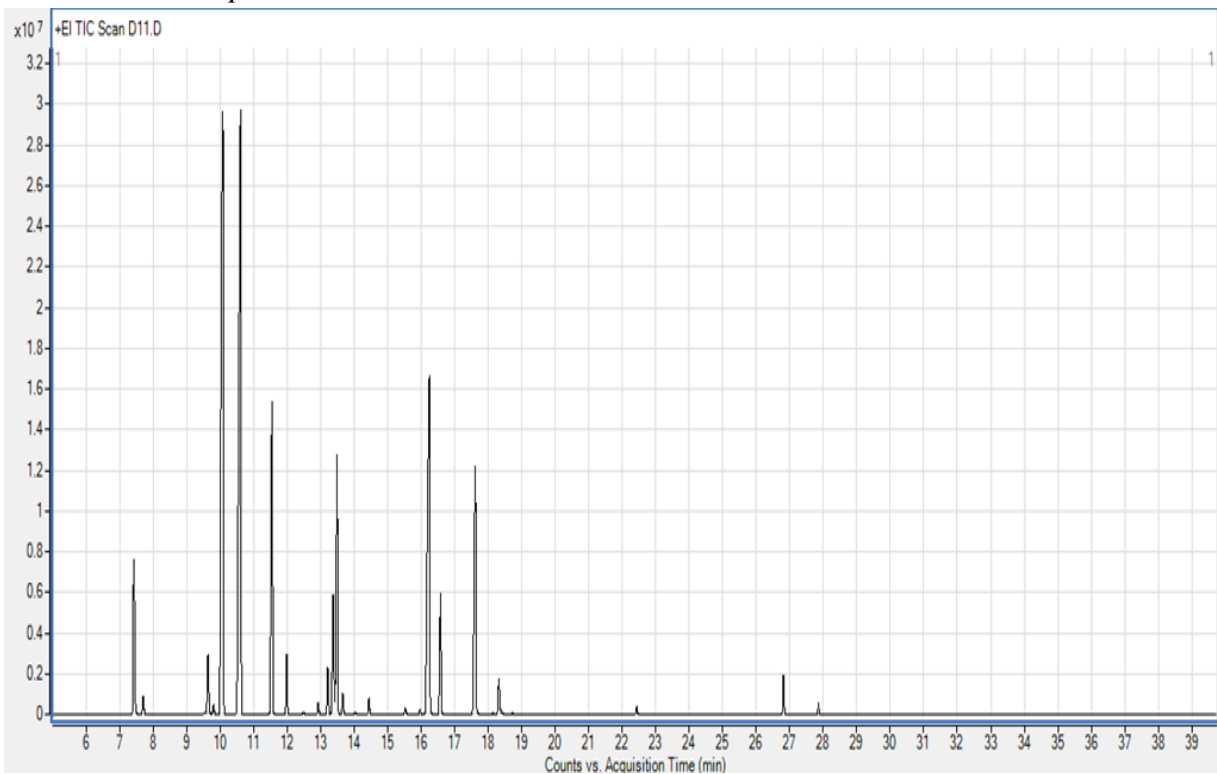
Supplementary figure. 7. Gas chromatogram of the volatile fraction determined by means of HS-GC-MS for *Salvia nemorosa*.



Supplementary figure. 8. Gas chromatogram of the volatile fraction determined by means of HS-GC-MS for *Salvia aethiopsis*.



Supplementary figure. 9. Gas chromatogram of the volatile fraction determined by means of HS-GC-MS for *Salvia amplexicaulis*.



Supplementary figure. 10. Gas chromatogram of the volatile fraction determined by means of HS-GC-MS for *Salvia officinalis*.