



Original Scientific Report

New floristic and syntaxonomic data from rice fields in Bulgaria

Chavdar GUSSEV^{1*}, Valeri GEORGIEV¹, Sonya TSONEVA¹ and Rossen TZONEV²

¹ Bulgarian Academy of Sciences, Institute of Biodiversity and Ecosystem Research, Acad. Georgi Bonchev St., bl. 23, 1113 Sofia, Bulgaria

² "St. Kliment Ohridski" Sofia University, Faculty of Biology, Department of Ecology and Environmental Protection, 8 Dragan Tzankov Blvd., 1164 Sofia, Bulgaria

* correspondence: chgussev@gmail.com

ABSTRACT:

The present work is a floristic and phytocoenological study of rice fields in the Thracian Lowland, South Central Bulgaria. Two species new to the Bulgarian alien flora were found as a result: *Heteranthera reniformis* (Pontederiaceae) and *Rotala ramosior* (Lythraceae). The class *Oryzetea sativae* is documented with phytocoenological relevés for the first time in Bulgaria.

Keywords:

oryzicolous flora and vegetation, weeds, *Oryzetea sativae*

UDC: 633.18(497.4)

Received: 11 October 2019

Revision accepted: 03 February 2020

Rice fields are highly dynamic temporary aquatic ecosystems with quickly changing chemical properties and water levels. The biotic communities related to them develop rapidly and have a very specific oryzicolous flora and vegetation (RAUS & RAABE 2002; BRULLO & GUARINO 2007). Rice is not a widespread crop in Bulgaria. Paddy fields cover an area of about 12 000 ha (Fig. 1), exclusively in the Thracian Lowland (CLC 2012; SLAVOVA 2015). Information about the weed communities in rice fields of the country is outdated (DIMITROV 1949). However, there are some recent reports about several weeds new to Bulgaria (CHESCHMEDZHIEV & STOYCHEV 2005; VLADIMIROV & DELCHEVA 2016; VLADIMIROV *et al.* 2017) from these habitats. A probable presence of the class *Oryzetea sativae* Miyawaki 1960 in Bulgaria was assumed by TZONEV *et al.* (2009), but without any published relevés.

Among countries neighbouring Bulgaria, Greece is the most important as a grower of rice, with rice fields distributed in the northern part of the country: in the deltas of the rivers Nestos, Axios, etc. (NTANOS 1997). Rice is also cultivated on a large area in European Turkey, especially close to the town of Edirne (DAMAR 2006; UZUN & DEMIRKAN 2013).

Floristic and phytocoenological studies of the rice fields in South Central Bulgaria were carried out in

2016–2017. Methods of the floristic school of BRAUN-BLANQUET (1964) were applied in the vegetation studies. All data analyses were performed with the SYN-TAX 2000 program package (PODANI 2001). The work of MUCINA *et al.* (2016) was used for determination of the synoptic scheme. Herbarium specimens are deposited in the herbarium of the Institute of Biodiversity and Ecosystem Research, Bulgarian Academy of Sciences (SOM).

Two species new for the Bulgarian vascular flora (typical oryzicolous xenophytes) were found as a result of these studies, in addition to a new syntaxon.

Heteranthera reniformis RUIZ & PAV. FL. PERUV. 1: 43. 1798 (Fig. 2)

Thracian Lowland: Rice fields ca. 2.5 km south of Graf Ignatievo village (Plovdiv district), 42.25264° N, 24.74239° E, 188 m a.s.l., 12.09.2016, leg. & det. Tsoneva S, Gussev Ch & Georgiev V (SOM 176690, SOM 176691); Thracian Lowland: Rice fields ca. 2.5 km south of Graf Ignatievo village (Plovdiv district), 42.25380° N, 24.74084° E, 190 m a.s.l., 13.09.2016, leg. & det. Tsoneva S, Gussev Ch & Georgiev V (SOM 176683, SOM 176689).

This species is an annual or facultatively perennial plant, with a native range in North, Central and South America (HORN 2002). It is distinguished easily from the other

Table 1. Diagnostic table of the association *Oryzo sativae-Echinochloetum cruris-galli*.

Relève number	1	2	3	4	5
Locality	Saedinenie	Saedinenie	Trud	Dinkata	Dinkata
Date	3.10.2017	3.10.2017	3.10.2017	3.10.2017	3.10.2017
Latitude	42.2143	42.21917	42.25376	42.26149	42.26072
Longitude	24.55976	24.55711	24.74092	24.28945	24.28648
Sample area	25	9	100	25	100
Coverage	60	70	90	90	95
Diagnostic species for the association					
<i>Oryza sativa</i>	+	3	4	1	3
<i>Echinochloa crus-galli</i>	2a	2a	2a	2a	2a
<i>Ammannia coccinea</i>	1	1	2a		+

Diagnostic species for the class *Oryzetea sativae* Miyawaki 1960; order *Cypero difformis-Echinochloetalia oryzoidis* O. de Bolòs et Masclans 1955; and alliance *Oryzo sativae-Echinochloion oryzoidis* O. de Bolòs et Masclans 1955

<i>Diplachne fascicularis</i>	2a	2a	1	4	
<i>Cyperus difformis</i>	3	+	1		2a
<i>Lindernia dubia</i>	1		+	+	+
<i>Heteranthera rotundifolia</i>	+	2a			
<i>Rotala ramosior</i>	2a			+	
<i>Heteranthera reniformis</i>			+		
<i>Pycnus serotinus</i>				+	
Other species					
<i>Persicaria hydro Piper</i>			+		+
<i>Schoenoplectus triqueter</i>				+	1
<i>Persicaria lapathifolia</i>	+			+	
<i>Alisma plantago-aquatica</i>				+	
<i>Bidens tripartita</i>			+		
<i>Bolboschoenus maritimus</i>					3
<i>Characeae</i>		+			
<i>Chenopodium album</i>	+				
<i>Cirsium arvense</i>	+				
<i>Cynodon dactylon</i>	1				
<i>Lemna minor</i>				+	
<i>Plantago lanceolata</i>	+				
<i>Polygonum aviculare</i>	1				
<i>Portulaca oleracea</i>	+				
<i>Pycnus flavescens</i>		+			
<i>Setaria viridis</i>		+			
<i>Typha angustifolia</i>			+		

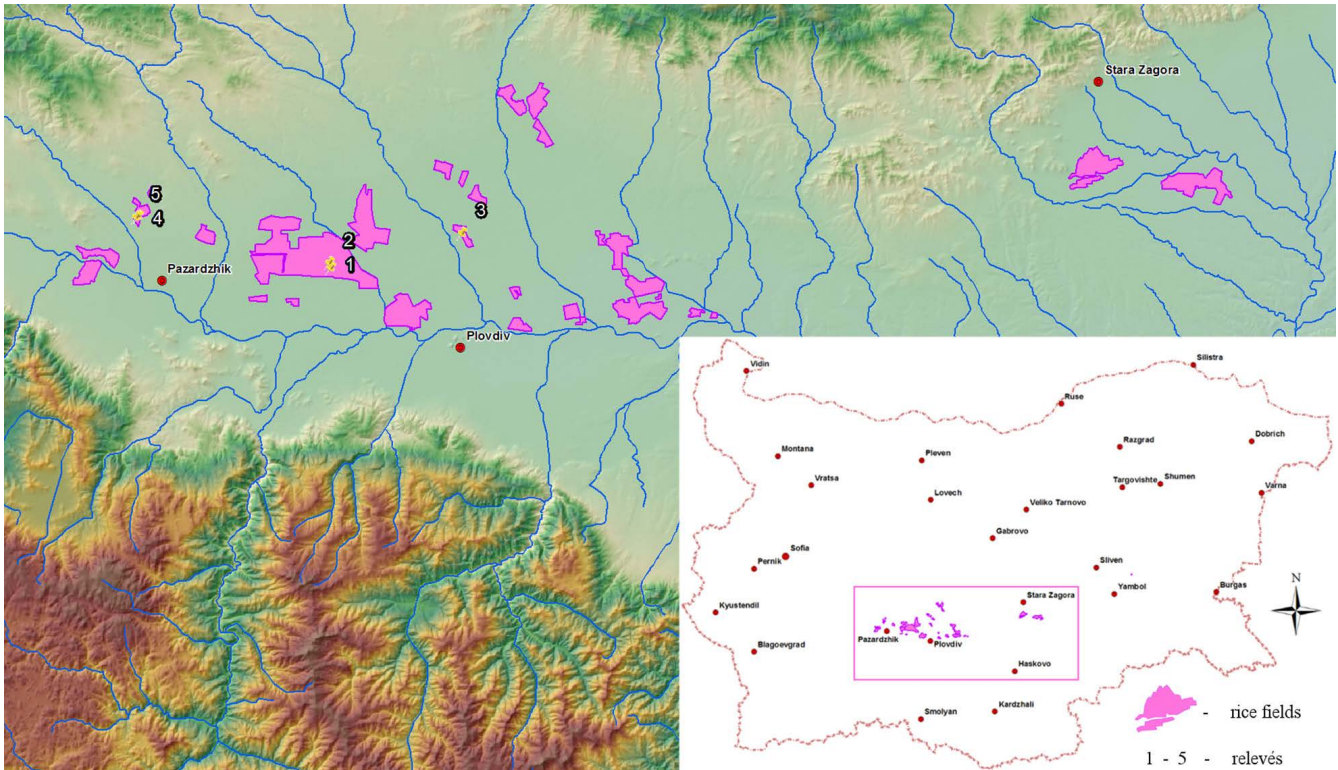


Fig. 1. Distribution of rice fields and studied vegetation in Bulgaria.

representative of the genus in Bulgaria, *H. rotundifolia*, by its leaf blades. The leaves are reniform, usually as wide as or even wider than long; the procumbent vegetative stems readily root at the nodes (nodes rootless in *H. rotundifolia*); and the inflorescences are 3–8-flowered (one-flowered in *H. rotundifolia*) (RAUS *et al.* 2002). In Europe, this species has been reported from Greece (RAUS *et al.* 2002), North Macedonia (KAROV *et al.* 2005) and also as naturalised in rice fields of France, Portugal and Italy (HUSSNER 2012; DAISIE 2017).

***Rotala ramosior* (L.) Koehne in Martius, Fl. Bras. 13(2): 194. 1877 (Fig. 3)**

Thracian Lowland: Rice fields ca. 2.5 km south of Graf Ignatievo village (Plovdiv district), 42.25380° N, 24.74084° E, 190 m a.s.l., 13.09.2016, leg. & det. Tsoneva S, Gussev Ch & Georgiev V (SOM 176682).

Rotala L. is a genus new to Bulgaria. According to BLACKWELL (1970), it differs from *Ammannia* L. in its leaves, which are strongly attenuate at the base or narrowed to a petiole; solitary flowers in the leaf axils; and possession of a septicial capsule with a finely striate outer-wall surface. The species is a small, hairless annual, naturally distributed in North and Central America (CAMP *et al.* 2011). In Europe, it has been reported from rice fields of Greece, North Macedonia and Italy (RAABE & RAUS 2002; HUSSNER 2012; LANSDOWN *et al.* 2016; DAISIE 2017).

Synoptic scheme of established syntaxa

Class *Oryzetea sativae* Miyawaki 1960

Order *Cypero difformis-Echinochloetalia oryzoidis* O. de Bolòs et Masclans 1955

Alliance *Oryzo sativae-Echinochloion oryzoidis* O. de Bolòs et Masclans 1955

Association *Oryzo sativae-Echinochloetum cruris-galli* Soó ex Ubrizsy 1948

On the basis of phytocoenological relevés (see Table 1), it can be concluded that these communities belong to the association *Oryzo sativae-Echinochloetum cruris-galli*, the only association of the class *Oryzetea sativae* present in Europe (see BOLÒS & MASCLANS 1955; UBRIZSY 1961; NINOT *et al.* 2011; BORHIDI *et al.* 2012; etc.). Typical of this association is the presence of many exotic weeds like *Ammannia coccinea* Rottb., *Lindernia dubia* (L.) Pennell, *Heteranthera rotundifolia* (Kunth) Griseb. and *H. reniformis* Ruiz & Pav., *Rotala ramosior* (L.) Koehne, *Diplachne fascicularis* (Lam.) P. Beauv., etc., and naturalised neophytes like *Cyperus difformis* L. However, there are also hygrophytes typical of the Bulgarian flora, such as *Persicaria lapathifolia* (L.) Delarbre, *Pycnus flavescens* (L.) Rchb. and *Typha angustifolia* L. More specific is the delayed development of this vegetation before rice harvesting: in late October, even November. The floristic structure of weed vegetation is highly dynamic. For example, a comparison with the species composition given by DIMITROV (1949)



Fig. 2. *Heteranthera reniformis*: a) close view, b) population in a harvested rice field.

shows that many new species of tropical origin inhabit the vegetation plots. The basin of the river Maritsa connects Bulgaria and Turkey. This river can be regarded as the main migratory route north-westwards for these species. In order to clarify all the floristic and ecological peculiarities of rice fields in Bulgaria, some new and more detailed floristic and phytocoenological investigations will be necessary.

Acknowledgements – The authors gratefully acknowledge support of the Financial Mechanism of the European Economic Area and the Bulgarian federal budget extended within the framework of Programme BG03 ‘Biodiversity and Ecosystem Services’ to V. Georgiev, S. Tsoneva and Ch. Gushev for field work as part of the WEMA project. We also thank Mrs. Lidia Shvedova for checking and improving the English.

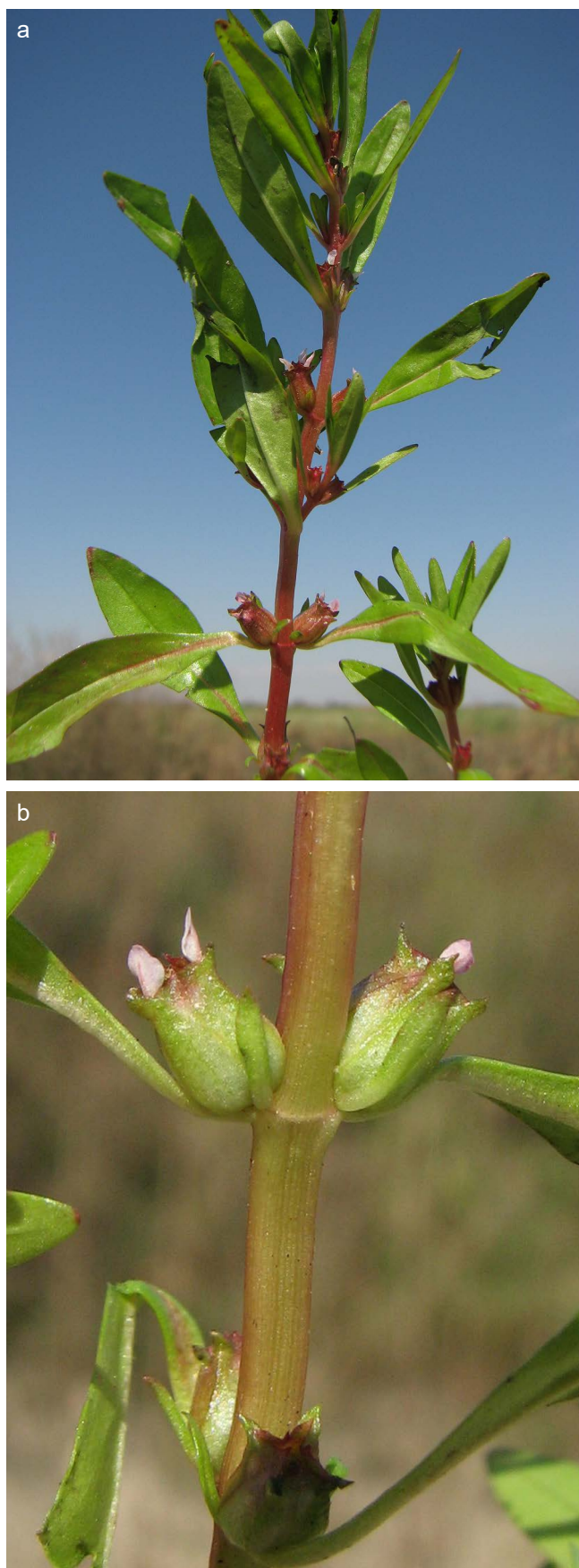


Fig. 3. *Rotala ramosior*: a) general view, b) close-up of the plant.

REFERENCES

- BLACKWELL W. 1970. The Lythraceae of Ohio. *The Ohio Journal of Science* **70**(6): 346–352.
- BOLÒS O & MASCLANS F. 1955. La vegetación de los arrozales en la región Mediterránea. *Collectanea Botanica* **4**: 415–434.
- BORHIDI A, KEVEY B & LENDVAI G. 2012. *Plant communities of Hungary*. Akademia Kiadó, Budapest, Hungary.
- BRAUN-BLANQUET J. 1964. *Pflanzensoziologie. Grundzüge der Vegetationskunde*. Springer-Verlag, Vienna and New York.
- BRULLO S & GUARINO R. 2007. The Mediterranean weedy vegetation and its origin. *Annali di Botanica nuova serie* **7**: 101–110.
- CAMP P, GAMON J & ARNETT J (eds.). 2011. *Field guide to the rare plants of Washington*. University of Washington Press. Seattle, USA.
- CHESCHMEDZHIEV I & STOYCHEV G. 2005. Representative of Pontederiaceae Kunth. family in Bulgaria too. In: Jubilee Scientific Conference “State-of-the-Art and Problems of Agricultural Science and Education”, Agricultural University – Plovdiv. *Scientific Works* **50**(5): 167–172.
- CLC 2012. *Corine Land Cover 2012 seamless vector data*. European Environment Agency. <https://www.eea.europa.eu/data-and-maps/data/clc-2012-vector> [Accessed on 15 August 2018].
- DAISIE. 2017. European Summary. *Rotala ramosior* <http://www.europe-aliens.org/speciesFactsheet.do?speciesId=9525>; *Heteranthera reniformis* <http://www.europe-aliens.org/speciesFactsheet.do?speciesId=5411> [Accessed on 31 August 2018].
- DAMAR İ. 2006. *Edirne İli Çeltik Alanlarında Bulunan Yabancı Ot Türleri ve Yoğunluklarının Belirlenmesi*. Master's degree thesis, Edirne.
- DIMITROV S. 1949. Sur les mauvaises herbes dans les risières en Bulgarie. *Annuaire Del'Université de Plovdiv, Faculté Agronomique* **4**: 1–22.
- HORN CH. 2002. Pontederiaceae Kunth: Pickerel-weed family. In: FLORA OF NORTH AMERICA EDITORIAL COMMITTEE (eds.), *Flora of North America North of Mexico, Magnoliophyta: Liliidae: Liliales and Orchidales* **26**, pp. 37–46, Oxford University Press, Oxford, New York.
- HUSSNER A. 2012. Alien aquatic plant species in European countries. *Weed Research* **52**: 397–406.
- KAROV I, MITREV S, MIHAJLOV L, RISTOVA D, NAKOVA E & KOVAČEVIĆ B. 2005. *Heteranthera reniformis* Ruiz & Pavon new weed in rice field in the region of Kočani. *Yearbook 2004/2005*, pp. 147–153.
- LANSDOWN R, ANASTASIU P, BARINA Z, BAZOS I, CAKAN H, CAKOVIC D, DELIPETROU P, MATEVSKI V, MITIC B, RUPRECHT E, TOMOVIC G, TOSHEVA A & KIRALY G. 2016. Review of alien freshwater vascular plants in south-east Europe. In: RAT M, TRICHKOVA T, SCALERA R, TOMOV R & ULUDAG A (eds.), *ESENIAS Report 2015 – State-of-the-Art of Invasive Alien Species in South-Eastern Europe*, pp. 141–158, University of Novi Sad, Faculty of Sciences, Department of Biology and Ecology, Novi Sad, Serbia, East and South European Network for Invasive Alien Species, Sofia, Bulgaria.
- MUCINA L, BÜLTMANN H, DIERSSEN K, THEURIAT JP, RAUS TH, ČARNI A, ŠUMBEROVÁ K, WILLNER W, DENGLER J, GAVILÁN GARCÍA R, CHYTRÝ M, HÁJEK M, DI PIETRO R, IAKUSHENKO D, PALLAS J, DANIELS F, BERGMEIER E, SANTOS GUERRA A, ERMAKOV N, VALACHOVIČ M, SCHAMINÉE J, LYSENKO T, DIDUKH Y, PIGNATTI S, RODWELL J, CAPELO J, WEBER H, SOLOMESHCH A, DIMOPOULOS P, AGUIAR C, HENNEKENS S & TICHÝ L. 2016. Vegetation of Europe: Hierarchical floristic classification system of vascular plants, bryophytes, lichen, and algal communities. *Applied Vegetation Sciences* **19**(1): 3–264.
- NINOT J, FONT X, MASALLES R & VIGO J. 2011. Syntaxonomic conspectus of the vegetation of Catalonia and Andorra. II: Ruderal communities. *Acta Botanica Barcinonensis* **53**: 113–189.
- NTANOS D. 1997. Rice production and research in Greece. *Cahiers Options Méditerranéennes* **24**(2): 127–133.
- PODANI J. 2001. *SYN-TAX-pc. Computer program for multivariate data analysis in ecology and systematics. User's manual*. Scientia Publishing, Budapest.
- RAABE U & RAUS TH. 2002. *Rotala ramosior* (L.) Koehne. In: GREUTER W & RAUS TH (eds.), *Med-Checklist Notulae* **21**. *Willdenowia* **32**: 202–203.
- RAUS TH, ELEFThERiADOU E & THEODOROPoulos K. 2002. *Heteranthera reniformis* Ruiz & Pav. In: GREUTER W & RAUS TH (eds.), *Med-Checklist Notulae* **21**. *Willdenowia* **32**: 207.
- RAUS TH & RAABE U. 2002. Paddy weeds – a neglected subject of Greek floristics. In: KAMARI G, PSARAS G, KIPARISSIS A & KONSTANTINIDIS TH (eds.), *Praktika* **9**. *Sinedriou Ellinikis Botanikis Eterias 9–12 Maiou 2002*, pp. 290–300, Argostoli-Kefalonia.
- SLAVOVA G. 2015. Global problems and opportunities for the production of rice. *Management and Sustainable Development* **4**(53): 21–26.
- TZONEV R, DIMITROV M & ROUSSAKOVA V. 2009. Syntaxa according to the Braun-Blanquet approach in Bulgaria. *Phytologia Balcanica* **15**(2): 209–233.
- UBRIZSY G. 1961. Unkrautvegetation der Reiskulturen in Ungarn. *Acta Botanica Hungarica* **7**: 175–220.
- UZUN K & DEMIRKAN H. 2013. Determination of weeds in rice region of Edirne-Uzunköprü and researches on chemical control of those weeds. *The Journal of Turkish Phytopathology* **42**(1-3): 1–11.
- VLADIMIROV V & DELCHEVA M. 2016. First record of the alien *Diplachne fascicularis* (Poaceae) in Bulgaria. *Flora Mediterranea* **26**: 209–214.
- VLADIMIROV V, DELCHEVA M, GEORGIEV V, TSONEVA S & GUSSEV CH. 2017. *Ammannia coccinea* Rottb. (Lythraceae): the first report for the Bulgarian alien flora. *Acta Zoologica Bulgarica* **9** (Supplementum): 39–42.



REZIME

Novi floristički i fitocenološki podaci sa pirinčanih polja u Bugarskoj

Chavdar GUSSEV, Valeri GEORGIEV, Sonya TSONEVA i Rossen TZONEV

Rad predstavlja florističku i fitocenološku studiju pirinčanih polja u Trakijskoj niziji centralne južne Bugarske. Kao rezultat konstatovane su dve nove alohtone vrste: *Heteranthera reniformis* (Pontederiaceae) i *Rotala ramosior* (Lythraceae). Klasa *Oryzetea sativae* je, takođe, prvi put zabeležena u Bugarskoj i predstavljena je fitocenološkim snimcima.

Ključne reči: pirinčana flora i vegetacija, korovi, *Oryzetea sativae*.